

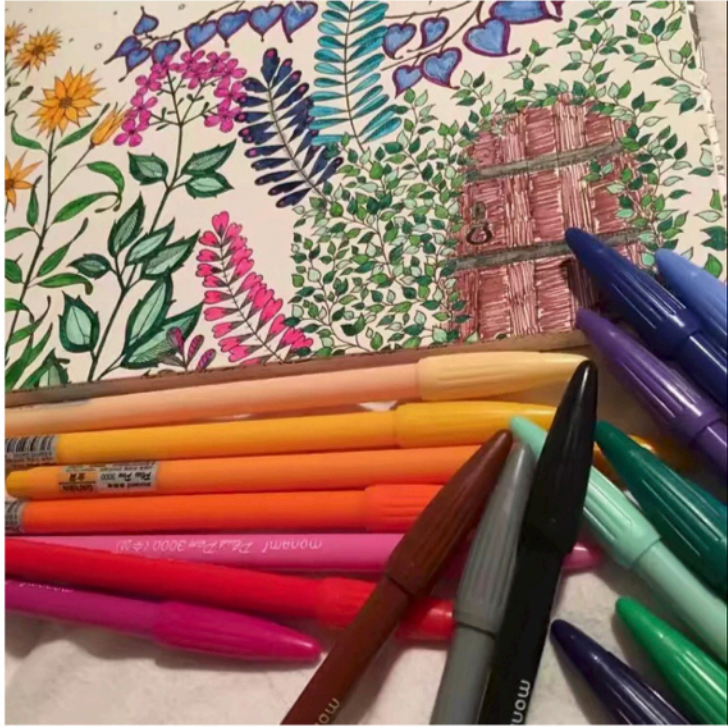
YUTONG (STEPHANIE) GAO

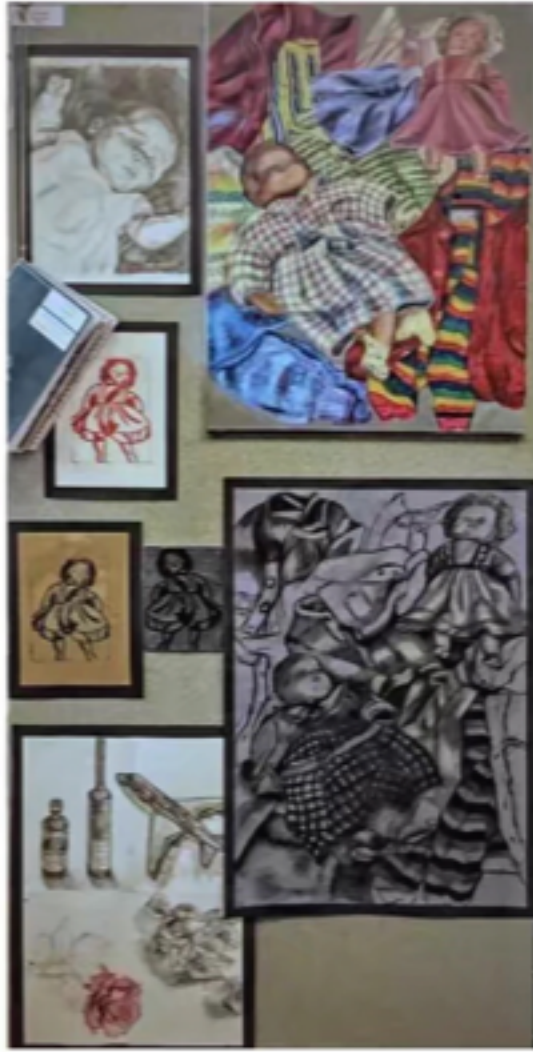
CENTRAL SAINT MARTINS
TEXTILE DESIGN



ZHE JIANG QIAN QIU KNITWEAR CO. LTD

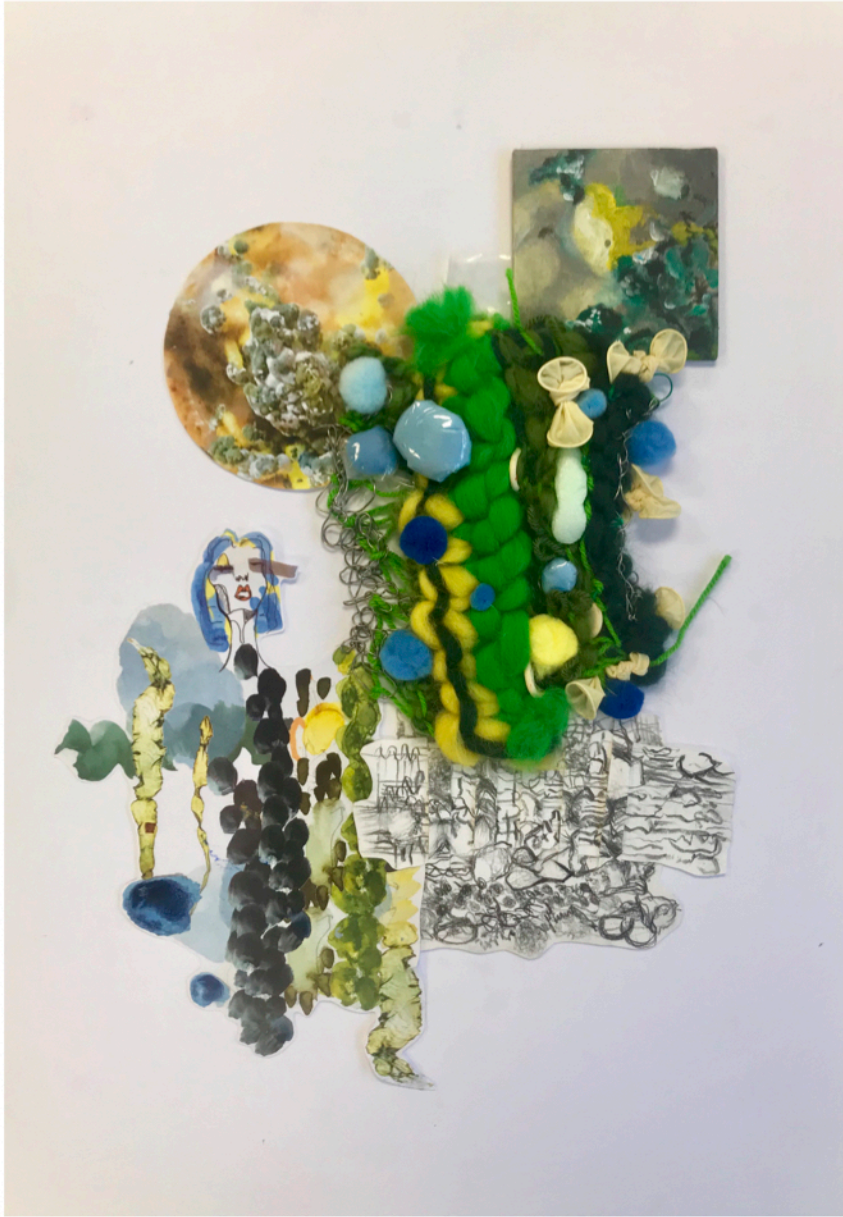


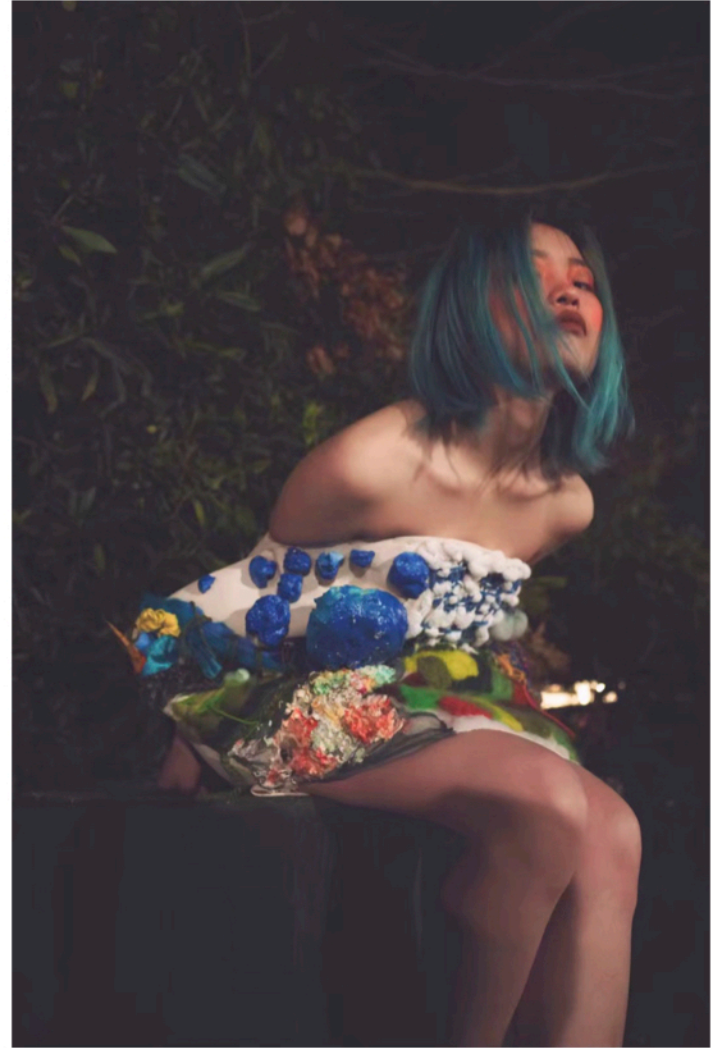


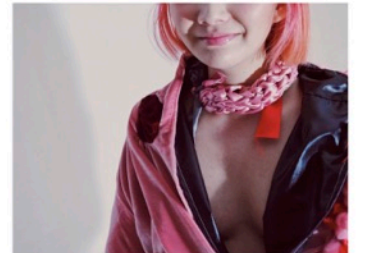
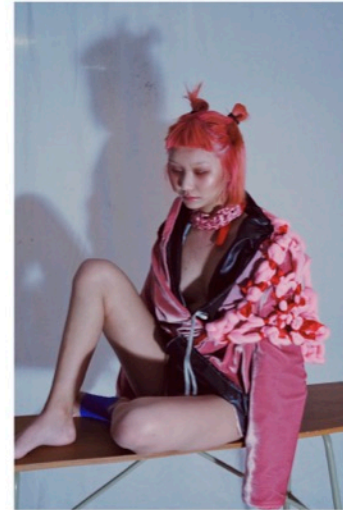
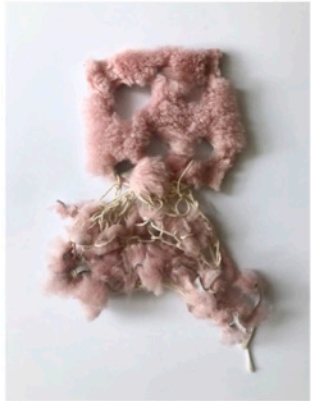




Jannike Sommar
'SHE' collection, 2014









Sally Cheung
'LISBON'S URBAN ENVIRONMENT: ORGANISED CONTROL VS. THE UNEXPECTED' , 2016



Virginia Durigon-Richardson
'Sketchbook page', 2015



Aruzhan Akchanova
'Fashion Accessory', 2017



CILLEVENGBERG
'The Knit Pool', 2017



Estelle Hanania
'Demonica Babble' , 2007





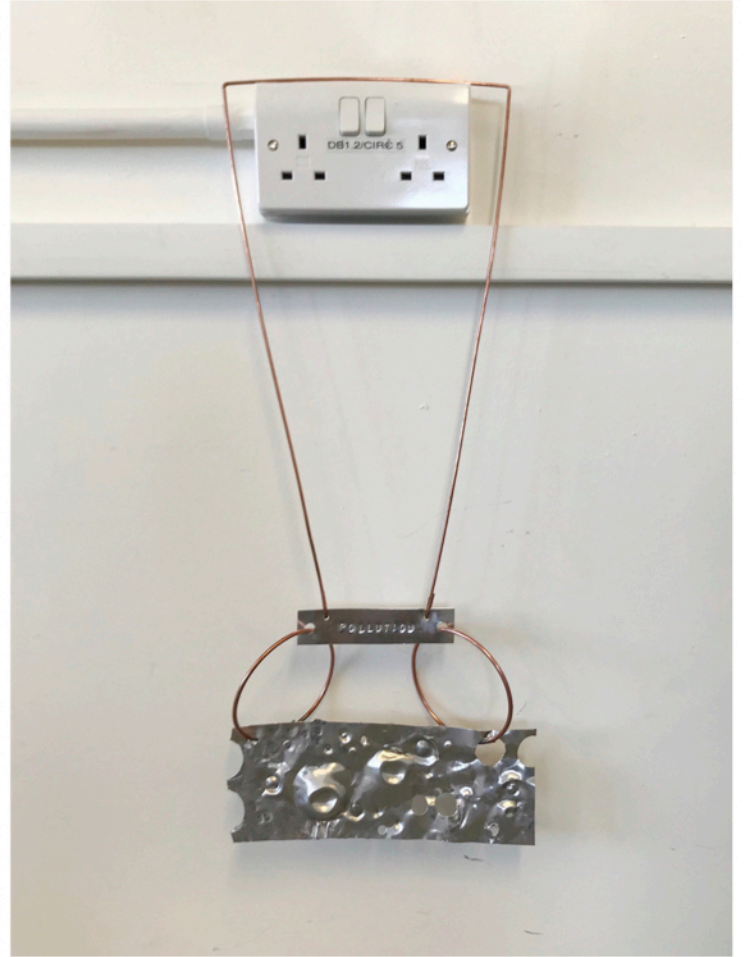
Michel Keck
'Studio'

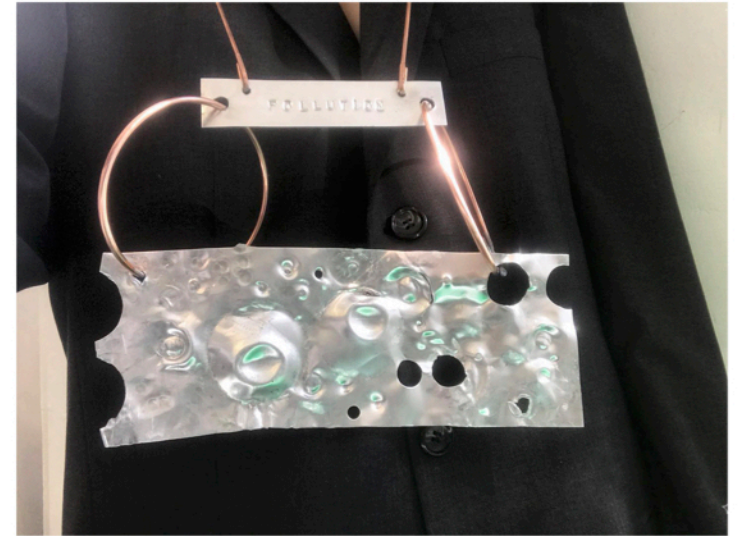
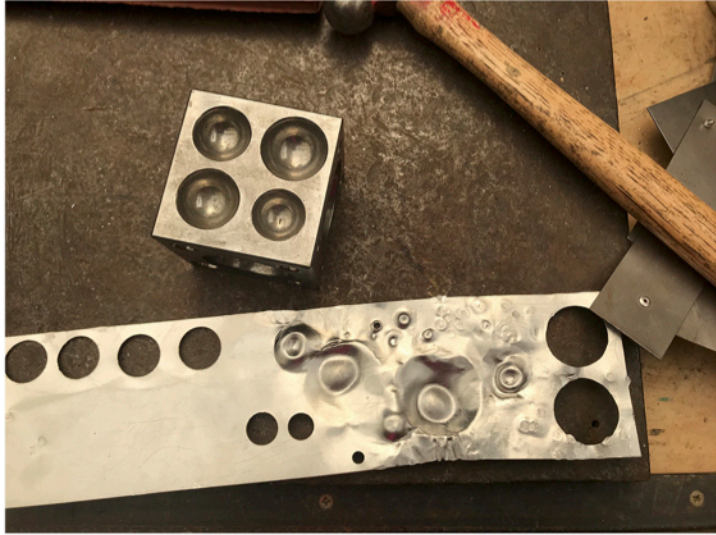


A.L. Swanson
'Studio'



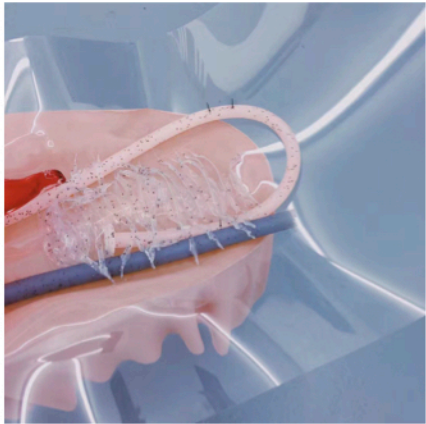
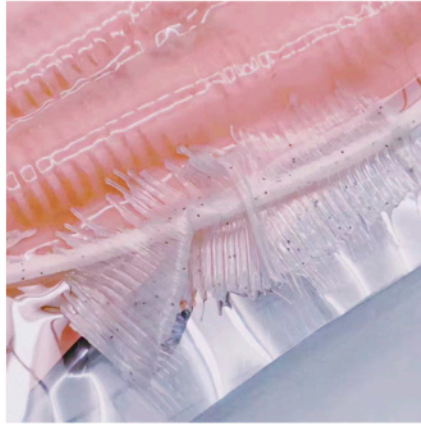








Chiara Grifantini
'Studio'



Pakui Hardware, collaborative artist duo Neringa Cerniauskaite and Ugnius Gelguda
'Baltic Trenial 13' , 'Immortalism' , 2017



Hana Fujimoto
'Graduate Collection', 2017



THE UNKNOWN FUTURE